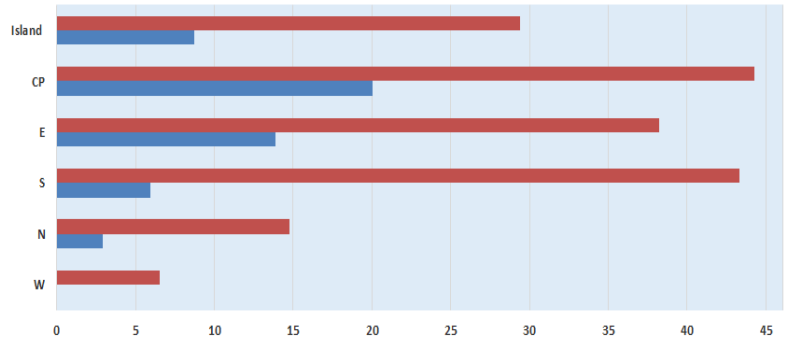


Mauritius Meteorological Services

Mean Rainfall for 1-15 October 2022

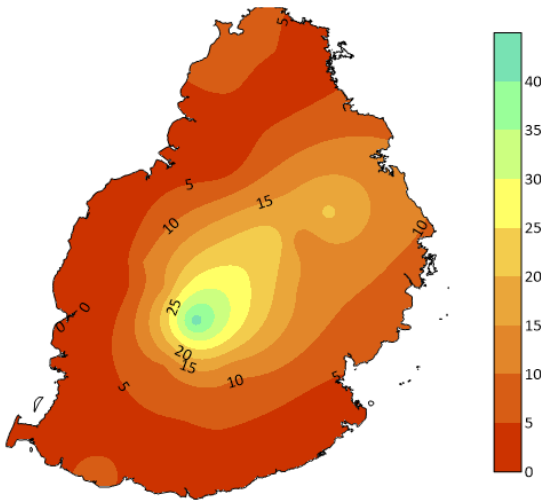
Mauritius

Dry conditions prevailed over the island during the first fortnight of October 2022, with 9 mm of rainfall, representing 31 % of the long-term mean. Rainfall was deficient almost over the whole island, especially in the region of Arnaud and Bois Cheri, where the deficiency was by 55-70 mm.

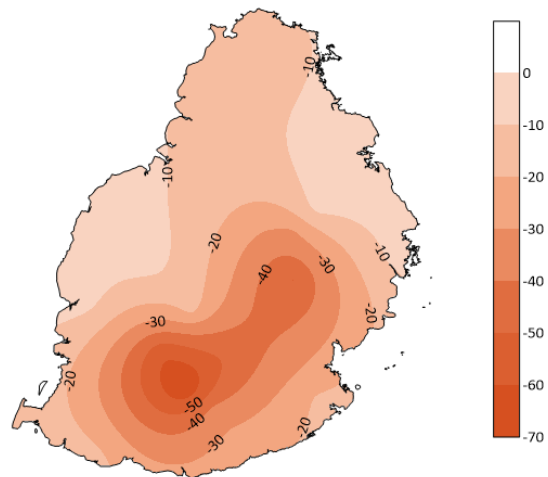


	W	N	S	E	CP	Island
■ First Half LTM (1991-2020) for October Rainfall (mm)	7	15	43	38	44	29
■ Actual Mean rainfall for 1st half October 2022 (mm)	0	3	6	14	20	9

Observed Rainfall (mm)



Rainfall Anomaly (mm)



Outer Islands

		Amount (mm)		
Stations		Actual Rainfall	LTM Rainfall	% of LTM
Rodrigues	Pointe Canon	13	26	50
	Plaine Corail	12	27	44
	Citronelle	18	52	35
Agalega		16	42	38
St Brandon		11	13	85

Dry conditions prevailed over Rodrigues and Agalega

Slightly below normal rainfall was recorded over St. Brandon

Ram Dhurmea

For Acting Director

18 October 2022